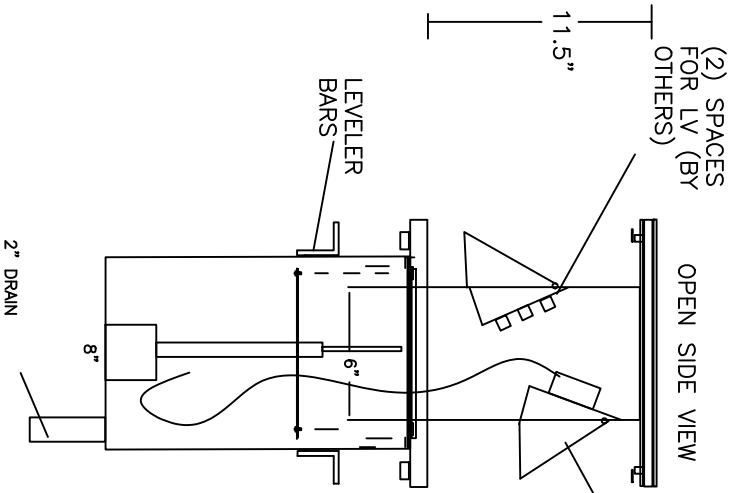


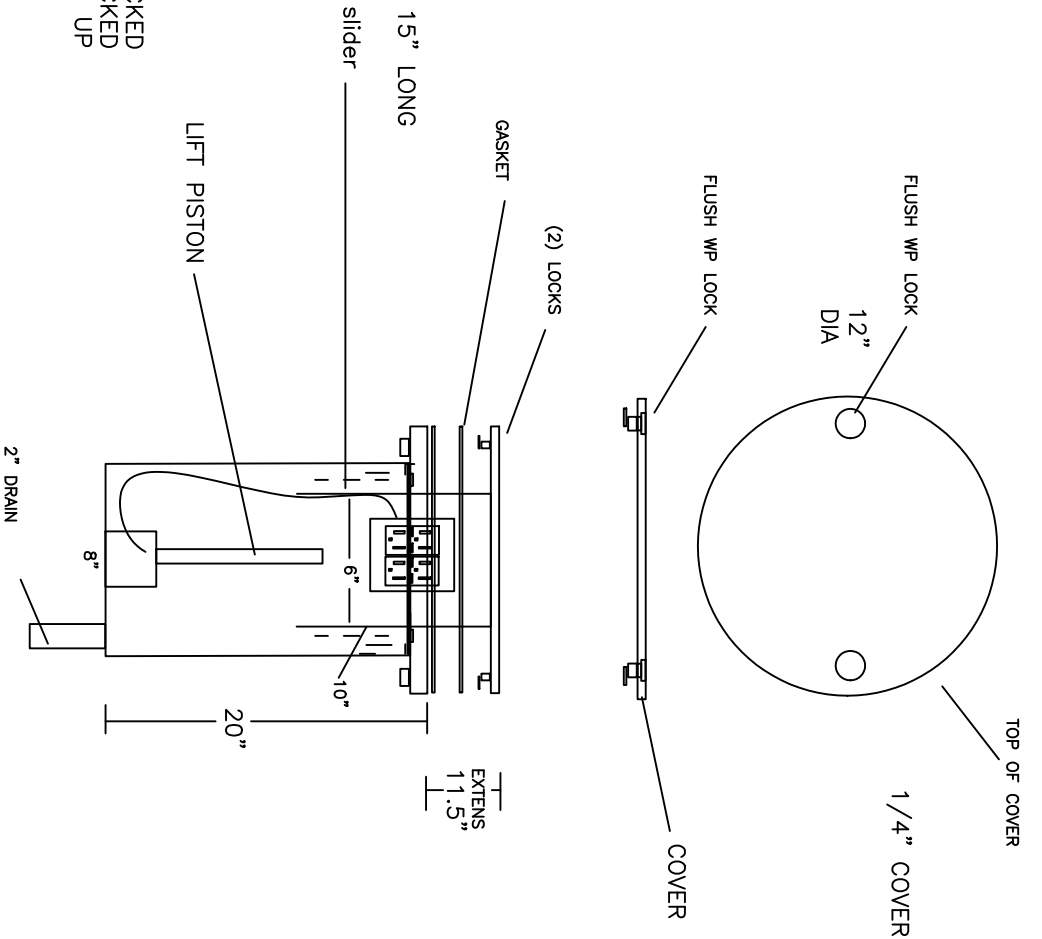
POP-UP IN-USE FLOOR BOX:
 ENCLOSURE: 304 STAINLESS STEEL
 COVER: 12" DIA., 304 1/4"SS W/LOCKS
 DEVICES: (2) 20A GFC RECEPTACLES
 W/(2) SPACES FOR LOW VOLTAGE
 (DEVICES BY OTHER)
 LISTED FOR EXTERIOR IN USE APPLICATIONS.



(2) 20A GFC RECEPTACLES RECESSED INTO THE PULL UP SECTION AND COVERS WITH 3-POSITION IN USE COVER.

PULL UP FLOOR BOX WILL RAISE UP ONCE THE COVER IS UNLOCKED EXTEND TO FULL LOCKED POSITION BY PULLING UP ON THE COVER.

TO LOWER THE PULL UP ACTIVATE THE 2 LEVERS ON EACH SIDE AND THE UNIT WILL DROP TO A REST WITH THE PISTON. STEP DOWN AND LOCK CLOSED.



PART#: CUB-WP-PU-(2)20/(2)LV-SS

CONDUIT HOLES ARE TO BE CUT IN FIELD AS REQUIRED BY INSTALLING ELECTRICAL CONTRACTOR ON ANY 4 SIDES ON BOTTOM 4" OF ENCLOSURE.

THIS IS A CAD GENERATED DRAWING. ALL CHANGES MUST BE MADE BY THE CAD OPERATOR



Combined Utilities Box Systems
 5325 N. COMMERCE AVE., #4, MOORPARK, CA 93021
 PHONE: 805/532-1776; FAX: 805/529-9466

POP-UP EXTERIOR FLOOR BOX

POP-UP (2)-LV REV.

DATE: 03/28/23	DRAWN BY: JJE	DRAWING NO: 2303007
----------------	---------------	---------------------